

Masonry Arch Bridges



HISTORIC BRIDGE #10955

COUNTY ROAD 707

CARROLL COUNTY

MASONRY ARCH

CROSSES - DITCH

DATE OF CONSTRUCTION – 1892

BUILDER - SANITARIUM COMPANY OF EUREKA SPRINGS

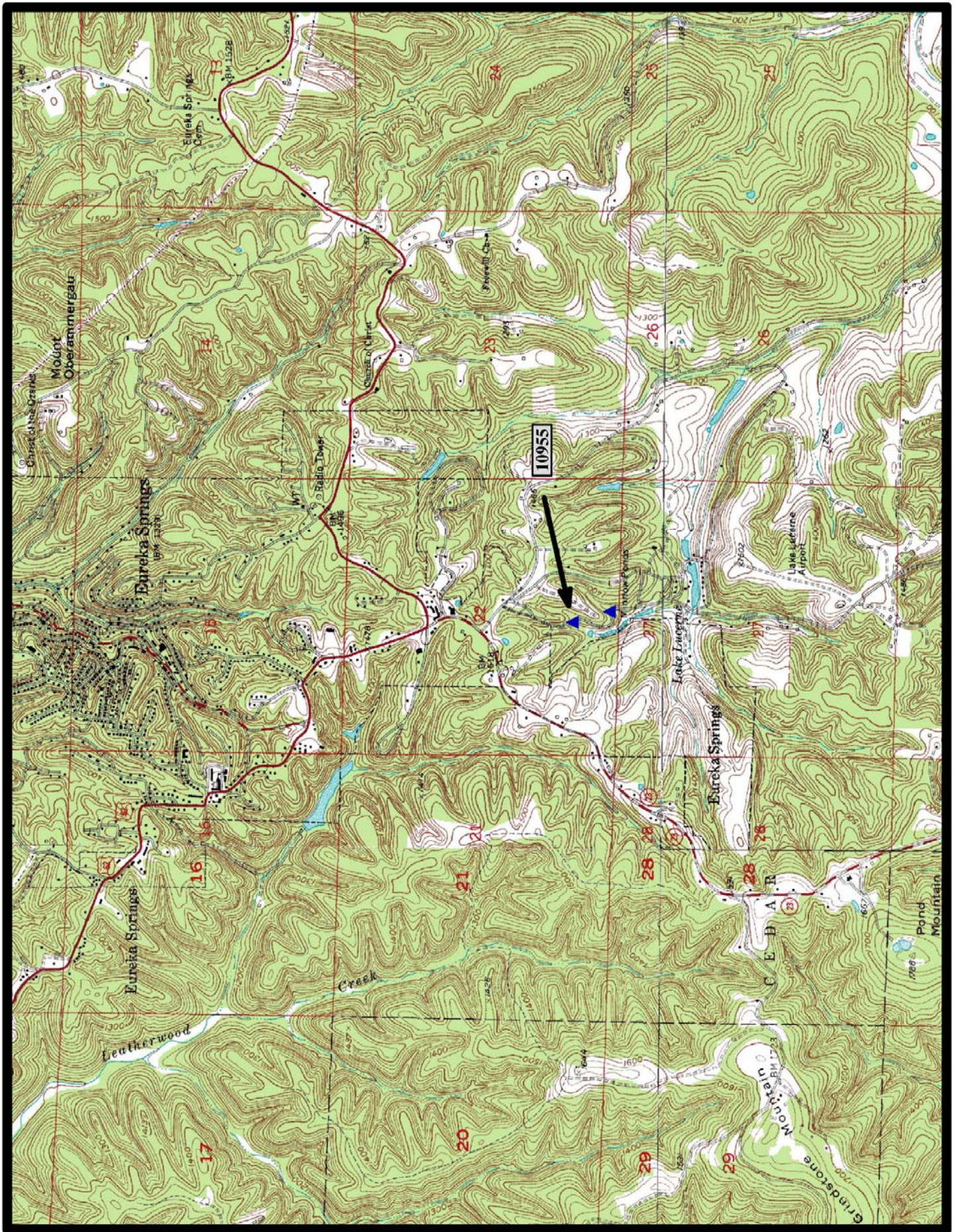
HISTORIC BRIDGE INVENTORY DATE - 2005

SHPO NUMBER – CR2112

HAER NUMBER - AR-103

DATE LISTED ON NATIONAL REGISTER -

LAT./LONG. 36:22:46.94, -93:44:06.53

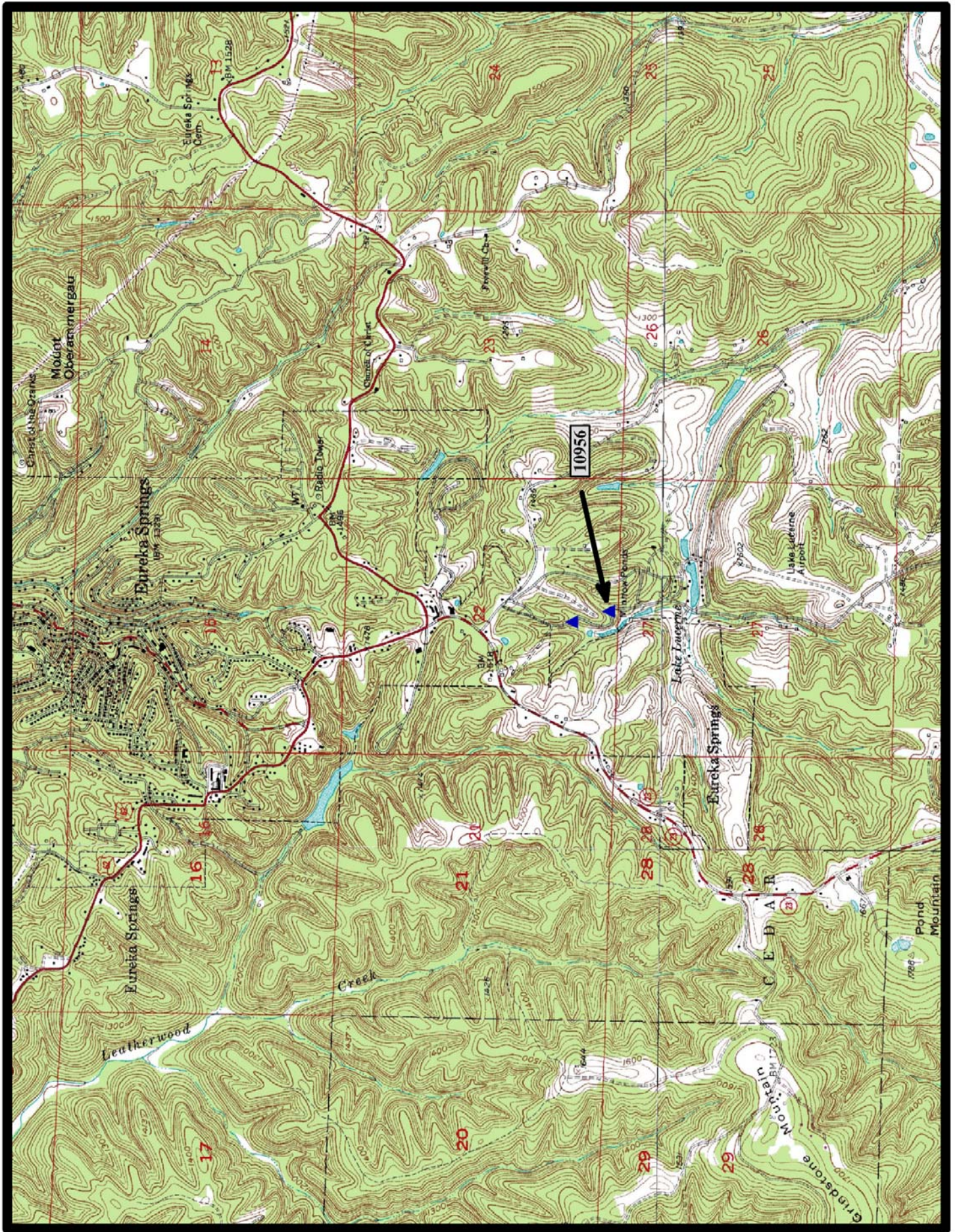


↑
North

Eureka Springs, Rockhouse 7.5 min. Quads



HISTORIC BRIDGE #10956
COUNTY ROAD 707
CARROLL COUNTY
MASONRY ARCH
CROSSES - DRY BRANCH
DATE OF CONSTRUCTION – 1892
BUILDER - SANITARIUM COMPANY OF EUREKA SPRINGS
HISTORIC BRIDGE INVENTORY DATE - 2005
SHPO NUMBER – CR2110
HAER NUMBER - AR-103
LAT./LONG. 36:22:39.92, -93:44:03.97

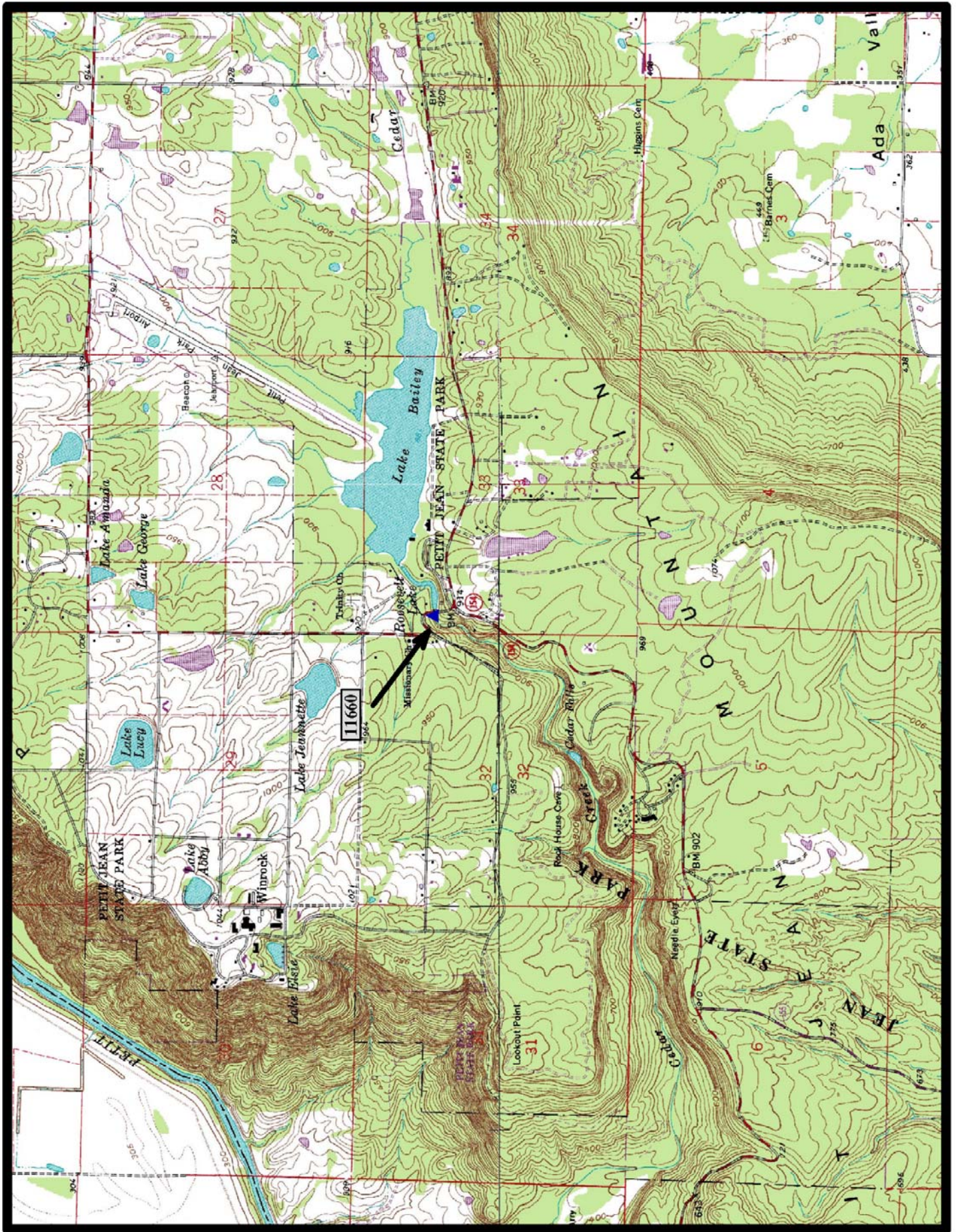


North

Eureka Springs 7.5 min. Quad



HISTORIC BRIDGE #11660
COUNTY ROAD 5
CONWAY COUNTY
MASONRY ARCH
CROSSES - CEDAR CREEK
DATE OF CONSTRUCTION - 1935
BUILDER - CIVILIAN CONSERVATION CORPS (CCC)
HISTORIC BRIDGE INVENTORY DATE - 1987
SHPO NUMBER - CN0076
HAER NUMBER - AR-31
DATE LISTED ON NATIONAL REGISTER - 4/9/1990
LAT./LONG. 35:07:42.59, -92:55:30.51

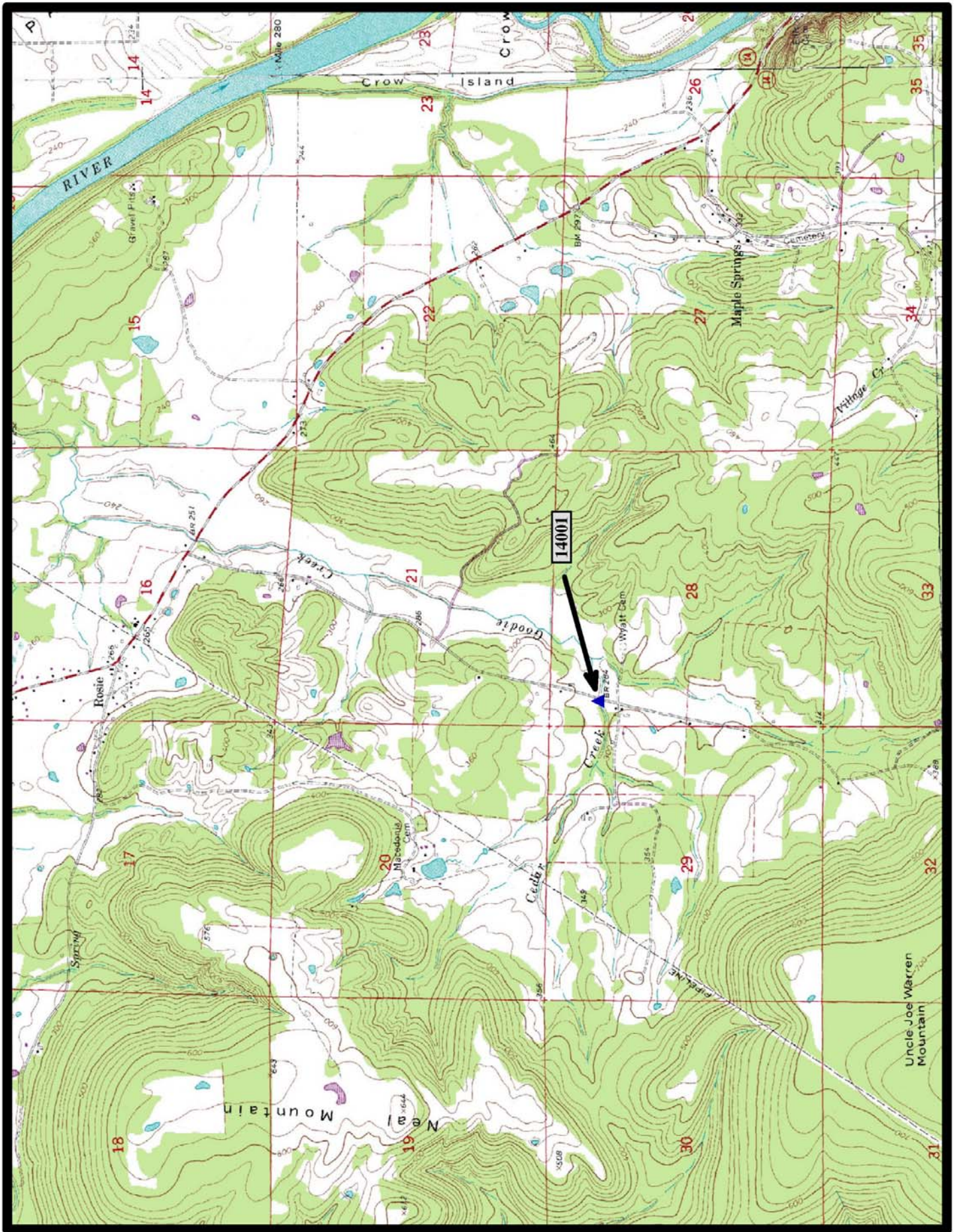


Atkins 7.5 min. Quad





HISTORIC BRIDGE #14001
COUNTY ROAD 23
INDEPENDENCE COUNTY
MASONRY ARCH
CROSSES - CEDAR CREEK
DATE OF CONSTRUCTION - 1941
BUILDER - WORKS PROGRESS ADMINISTRATION (WPA)
HISTORIC BRIDGE INVENTORY DATE - 1995
SHPO NUMBER - IN0237
HAER NUMBER -
DATE LISTED ON NATIONAL REGISTER - 5/18/1995
LAT./LONG. 35:38:35.22, -91:32:26.89



North

Salado 7.5 min. Quad